

DATA SHEET

Current Transformer 50X20 and 60X10, 400—600A



SCHRACK-INFO

- Passing bus bar primary
Single-phase current transformer
- Primary current 400...600A
- Secondary current 5A

TECHNICAL DATA:

REFERENCE STANDARDS

EN60044-1

SPECIFICATIONS

Rated primary current I_{pr} : 400A, 600A
 Rated frequency: 50Hz
 Rated secondaryprimary current I_{pr} : 5A

RATED BURDEN

Type:	Accuracy class		
	Class 0,5	Class 1	Class 3
400/5A		4VA	6VA
600/5A	4VA	6VA	8VA

HOUSING

Housing material:
Protection degree (EN60529):

Mounting:
Weight:

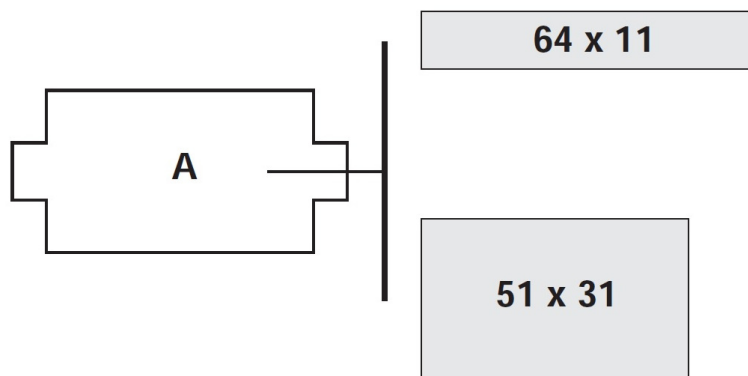
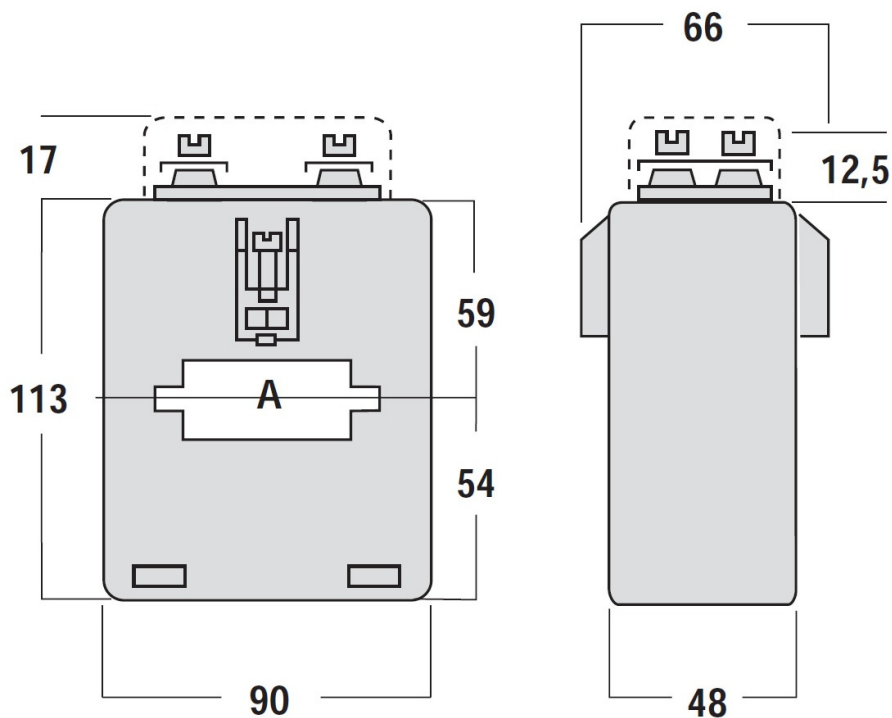
self extinguishing polycarbonate
IP00 terminals
IP20 with terminal cover with shroud
Fixing screw facilities for bar
500 grams

CONNECTIONS

Secondary winding:

screw terminals M4 and faston 6,3x0,8mm

DIMENSIONS:



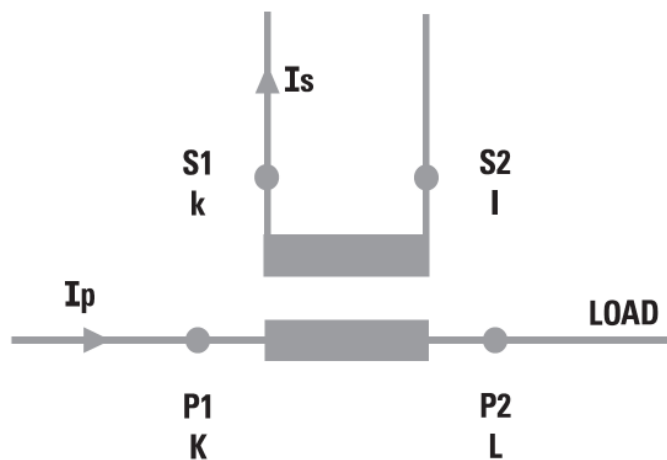
■ ATTENTION:

Working time guaranteed with secondary winding open for 1 minute Current transformers should not be operated with the secondary winding open-circuited because of the potentially dangerous over-voltages and overheating which can occur (EN 60044-1/A2).

To obviate this problem, it is possible to use accessory to be directly connected with the transformer secondary winding, which is able to continuously detect the terminal voltage and, if the voltage reaches the threshold value (18V) owing to a connection breakdown or disconnection of the devices, automatically closes again the circuit.

When the normal working conditions are restored, it automatically disconnects. Continuously connected with the secondary winding of the transformer to protect, it doesn't affect at all the current transformer features or performances. It doesn't need any external supply (self-supplied).

■ WIRING DIAGRAM:



■ ARTICLES:

Current Transformer, 400A/5A, 50x20mm	MG956040-A
Current Transformer, 600A/5A, 50x20mm	MG956060-A