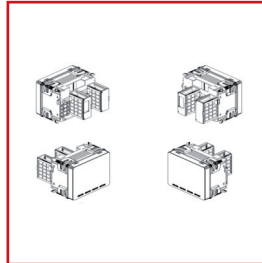
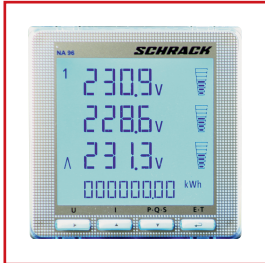


DATA SHEET:

LOW VOLTAGE NETWORK MONITOR NA65 AND NA96+



TECHNICAL DATA

- Three-phase line 80...500V (phase - phase)
- Connection with external dedicated CT
- Programmable external CT-VT ratio
- Optional moduls for profibus alarmcontacts, impulse output, analog output, RS485, LonWorks

DISPLAY

- Type of diplay: LCD backlit, automatic backlit reduction off after 20 s that keyboard is not used
- N° of display points: 10.000, 4 digits (high digit 12 mm)
- Energy count: 8 digit counter (high digit 8 mm)
- Engineering units: automatic display according to the set VT and CT ratios
- Resolution: automatic, with the highest possible number of decimals
- Decimal point: automatic, with the highest possible resolution
- Reading update: 1,1 seconds
- Accuracy (of the reading) NA96:

- Voltage: $\pm 0,5\%$ (80...500V phase - phase)	NA96+:
- Current: $\pm 0,5\%$ (10...120% I _n)	$\pm 0,2\%$ (80...690V phase - phase)
- Powers: $\pm 1\%$ (10...120% P _n /Q _n /S _n cos φ 0,5 ind...0,5 cap.)	$\pm 0,2\%$ (10...120% I _n)
- Frequency: $\pm 0,2$ Hz	$\pm 0,5\%$ (10...120% P _n /Q _n /S _n cos φ 0,5 ind...0,5 cap.)
- Energy count (reference voltage 400 V) NA96:

- Active energy: class 1 (EN62053-21)	NA96+:
- Reactive energy: class 2 (EN62053-23)	class 0,5 (EN62053-21)
	class 2 (EN62053-23)

DISPLAY PAGES

Display is divided into four menus which can be reached with the relevant function keys:

voltage / current / power three-phase / power factor

The total active or reactive energy (alternatively) is always displayed on all the display pages.

PROGRAMMING

- Parameters programming: front keyboard, 4 keys
- Programming access: protected by password
- Data and configuration parameters retention: non volatile memory (no battery)

PROGRAMMABLE PARAMETER

INPUT:

- Connection: single-phase and three-phase network, 3 and 4 wire
- Current rating: 1 – 5 A
- External VT ratio NA96: 1...10 (max. VT primary 1200 V), NA96+: 1...3000 (max. VT primary 300000 V)
- External CT ratio: 1...9999 (max. CT primary 50 kA/5A – 10 kA/1A)

CURRENT DEMAND – POWER DEMAND:

- Average period: 5/8/10/15/20/30/60 min.

DISPLAY:

- Contrast: 4 selectable values
- Backlight: 0 – 30 – 70 – 100%
- Customized page: quantities which can be displayed when switches on

INPUT

- Single-phase network, three-phase network 3- and 4-wire
- Three-phase voltage NA96: 80...500V (phase-phase), NA96+: 80...690V (phase-phase)
- Single-phase voltage NA96: 50...290V, NA96+: 50...400V
- Connection with external dedicated current transformers
- Current rating I_n : 5A – 1A
- Max. current I_{max} : $1,2I_n$
- Instantaneous overload: $20I_n/0,5$ seconds
- Frequency rating f_n : 50Hz
- Tolerance: 47...63Hz
- Type of measurement: true RMS value
- Harmonic content NA96: up to the 16th harmonic, NA96+: up to the 22th harmonic
- Voltage rated burden: $\leq 0,5VA$ (each phase)
- Current rated burden: $\leq 0,5VA$ (each phase)

AUXILIARY SUPPLY

- Rated value U_{aux} ac: 80...265V
- Rated frequency: 50Hz
- Working frequency: 47...63Hz
- Rated burden: $\leq 4VA$ (with modules)
- Rated value U_{aux} dc: 110...300VDC
- Rated burden: $\leq 3,5W$ (with modules)
- Protected against incorrect polarity

INSULATION (EN 61010-1)

- Installation category: III
- Pollution degree: 2
- Insulation voltage rating: 300V (phase neutral)
- Impulse voltage test: 6kV 1,2/50 μ s 0,5J
- Considered circuits: measure, aux. supply
- A.C. voltage test: 4kV r.m.s. value 50Hz/1min
- Considered circuits: all circuits and earth

TESTS FOR ELETROMAMAGNETIC COMPATIBILITY

- Emission and Immunity tests according to EN 62052-11

ENVIRONMENTAL CONDITIONS

- Reference temperature: 23°C ± 2°C
- Specified operating range: -5...55°C
- Limit range for storage and transport: -25...70°C
- Variation to the class index: ≤ 0,1% /°C
- Suitable for tropical climates
- Max. power dissipation for switchboard thermal calculation: ≤ 5W

HOUSING

- Housing: flush mounting (panel cutout 92 x 92mm)
- Front frame: 96 x 96 mm
- Depth: 62 mm
- Max. depth: 81 mm (with optional modules)
- Connections: screw terminals (input current) to plug out (input voltage)
- Volumetric terminals range: rigid cable max. 4,5 mm², flexible cable max. 2,4 mm²
- Ammetric terminals range: rigid cable max. 6 mm², flexible cable max. 4 mm²
- Housing material: self-extinguishing polycarbonate
- Protection degree (EN60529): IP54 front frame, IP20 terminals
- Weight: 285 grams

DESCRIPTION	ORDER NO.
Netanalyser NA96	MGF39000
Netanalyser NA96+	MGF39001
Modul for alarm contacts	MGF3900A
Modul for impulse contacts	MGF3900
Modul for analog contacts	MGF3900M
Modul with RS485 interface	MGF3900R
Modul with profibus interface	MGF3900P
Modul with LonWorks interface	MGF3900L