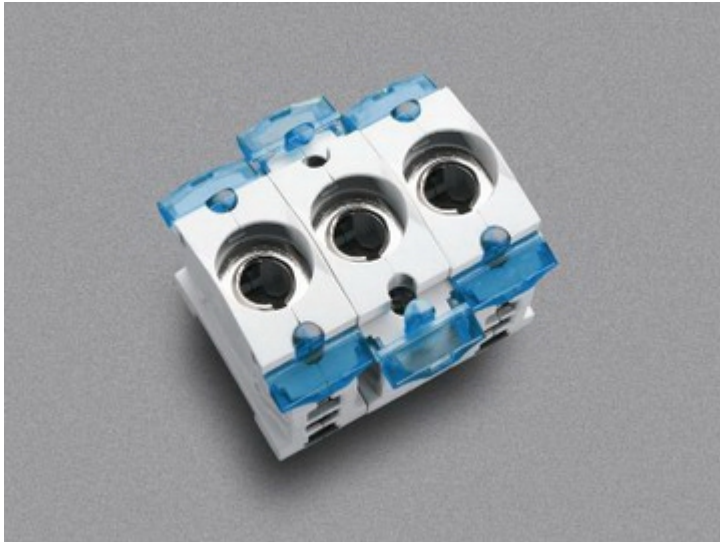


## D0 fuse base, panel-mounting (31 302)



### Description

#### Article

Part No.: 31 302

CUSTO<sup>®</sup> Panel

D0 fuse base, panel-mounting

E 14 / 16 A / 3P 400V

touch protected

#### System

DIN rail

Product group 03

Subgroup 12

pack size 3

EAN 4021267313029

#### Advantages of the product

large clamping range, holder for label

Catalog page 2015 : 6/4

eCl@ss 6.1 27142120  
eCl@ss 7.1 27142120  
ETIM 4.0 EC001644  
ETIM 5.0 EC001644

## Approvals

### Standards

IEC 60269-1:2006 + A1:2009 + A2:2014  
IEC 60269-3:2010 + A1:2013

### Approvals

Germanischer Lloyd, VDE



Type number: CEB14

## Product data

### Electrical data

Rated current (IEC): 16 A  
Rated voltage (IEC) AC: 400  
V  
Rated voltage (IEC) DC: 250  
V

Power dissipation:

The power dissipation at a typical load of 80% of the rated current results to 0.8 W.  
(The power dissipation for operation with rated current would be 1.2 W.)

rated isolation voltage  $U_i$  (AC): 460  
V  
Rated surge voltage  $U_{imp}$ : 6 kV  
max. permitted voltage (IEC) AC: 400  
V  
max. permitted voltage (IEC) DC: 250  
V

cond. rated short-circuit current with fuses: 50 kA / 400 V AC  
8 kA / 250 V DC  
approved with fuse links of characteristics: gG

for fuse links and gauge rings as per DIN VDE 0636-3 IEC / EN 60269-3

### **Mechanical data**

W x H x D: 81 x 68 x 55  
Weight: 23 kg/100  
Poles: 3-pole

### **Terminal points**

box terminal :

1,5 - 35 mm<sup>2</sup> flexible cables, directly or with wire-end ferrule

(flexible cables of maximum cross-section may not fit when using wire-end ferrule)

1,5 - 10 mm<sup>2</sup> solid

Md 2,5 - 3 Nm

2 cables can be connected, when both chambers of the terminal are used  
the maximum combination is 35mm<sup>2</sup> + 16mm<sup>2</sup>

### **Material properties**

Body: temperature stability 125°C,  
self-extinguishing in acc. to UL 94,  
creepage resistance CTI 600,  
halogen-free

Connecting screw +/- (PZ2), galvanized, chromized  
screws:

### **Version**

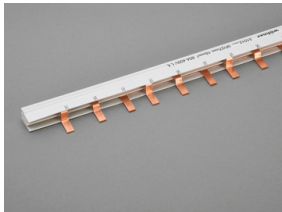
Part no. 31301 as 1-pole version

## Accessories



### 01 228

connecting terminal, front connection  
for comb-type busbars 31 056  
25 - 95 mm<sup>2</sup>



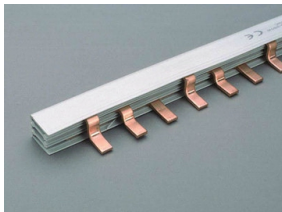
### 31 012

comb type busbar, insulated, 3-pole, bridge type  
80 A, pitch 27 mm, 1 m long  
16 mm<sup>2</sup>



### 31 029

connecting terminal, side connection  
for comb-type busbars 31 012  
6 - 50 mm<sup>2</sup>



### 31 056

comb bar, insulated, 3-pole, bridge type  
130 A, pitch 27 mm, 1 m long  
35 mm<sup>2</sup>



### 31 085

connecting terminal, front connection  
for comb-type busbars 31 012  
6 - 50 mm<sup>2</sup>