

NH fuse switch-disconnector size 1, 250 A, bus-mounting, connection top/bottom (33 601)



## Description

### Article

Part No.: 33 601

QUADRON® 60Classic

NH fuse switch-disconnector size 1, 250 A, bus-mounting, connection top/bottom

connection screw M10

with CrossLink® Technology

for busbars 12, 15, 20, 25, 30 x 5, 10 and section busbars

### System

60Classic

Product group 09

Subgroup 27

pack size 1

EAN 4021267336011

## Advantages of the product

CrossLink® adapter technology

Fast and safe conversion of the connection for top or bottom; the parts under voltage remain shock protected

Simple and safe clicking into place and making contact

Safe connection through shock protection split into two

Busbar supports for flat busbars can be mounted above each other

Self-closing test holes are available in the cover.

**Catalog page** 2015 : 2/25, 2/29

eCl@ss 6.1 27142108

eCl@ss 7.1 27142108

ETIM 4.0 EC001040

ETIM 5.0 EC001040

## Approvals

### Standards

IEC 60947-1:2007 + A1:2010 + A2:2014

IEC 60947-3:2008 + A1:2012

### Approvals

IEC (CB), UL, Germanischer Lloyd, VDE, CCC



for UL feeder circuits >250V

Type number: QCB-NH1

UL file: E230163, UL category (for USA): IZLT2 <http://www.ul.com>

CCC certificate: 2012010302563561

## Product data

### Electrical data

Rated current (IEC): 250 A

Rated voltage (IEC) AC: 690 V

Rated voltage (IEC) DC: 440 V

Rated current (UL): 250 A  
Rated voltage (UL) AC: 600 V

Utilisation category AC-22B (400V)  
AC (IEC 60947-3) : AC-23B (400V/160A)  
AC-21B (690V)  
AC-20B (1000V) at pollution degree 2

visible information required if used at more than 690V AC: do not switch under load

Utilisation category DC specifications: 2 current paths (L1,L3) in series  
DC (IEC 60947-3) : DC-20B (440 V)  
DC-20B (1000V) at pollution degree 2

visible information required if used at more than 440V DC: do not switch under load

#### Power dissipation:

The power dissipation at a typical load of 80% of the rated current results to 16.6 W.  
(The power dissipation for operation with rated current would be 26 W.)

rated isolation voltage  $U_i$  (AC): 800  
V  
Rated surge voltage  $U_{imp}$  : 6 kV  
max. permitted voltage (IEC) AC: 800  
V  
max. permitted voltage (IEC) DC: 800  
V

rated peak withstand current  $I_{pk}$  : 13.7 kA  
cond. rated short-circuit current with fuses: 80 kA / 690  
V  
approved with fuse links of characteristics: gG  
rated short-time withstand current  $I_{cw}$  : 8,1kA / 1s

SCCR: 100 kA

for fuse links IEC 60269-2-1 (I) / DIN VDE 0636-201 size 1 up to 23W power dissipation

Special operating conditions corresponding to IEC / EN 61439-1 may yield to faulty activations of pilot switches and fuse monitors. The operating conditions have to be considered for the analysis of status signals.

Entsprechend den angegebenen AC- und DC- Schalteigenschaften und unter Berücksichtigung der Überlastbedingungen, sind gewisse Abstände zu geerdeten Metallteilen einzuhalten. Nähere Informationen auf Anfrage. Bei Verwendung als Trennschalter ist die Einhaltung der Abstände nicht erforderlich.

Degree of protection IP30 at front, degree of protection near terminal depends on installation

### **Mechanical data**

W x H x D: 184 x 243 x 129

Weight: 266 kg/100

Poles: 3-pole

for busbars: 12, 15, 20, 25, 30 x 5, 10 and section busbars

front degree of protection: IP30

### **Terminal points**

screw M10

### **Material properties**

Main body: temperature stability 125°C,  
self-extinguishing in acc. to UL 94,  
creepage resistance CTI 600,  
halogen-free

Shock protection cover: temperature stability 125°C,  
self-extinguishing in acc. to UL 94,  
creepage resistance CTI 200

Handle: temperature stability 125°C,  
self-extinguishing in acc. to UL 94,  
creepage resistance CTI 200,  
halogen-free

Adapter plate: temperature stability 125°C,  
self-extinguishing in acc. to UL 94,  
creepage resistance CTI 600,  
halogen-free

Contacts: spring-loaded copper contacts, silver plated

Connecting screws: screw M10, galvanized, chromized

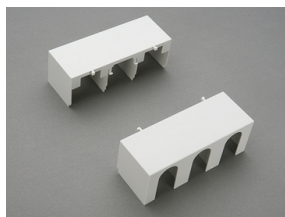
**Version**

Variant with box terminals: 33 600

Variant with electronic fuse monitoring: 33 325

Variant with electromechanical fuse monitoring: 33 160

## Accessories



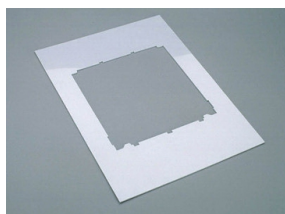
### 33 142

cover for cable lugs, top/bottom attachable  
for NH fuse switch disconnecter size 1



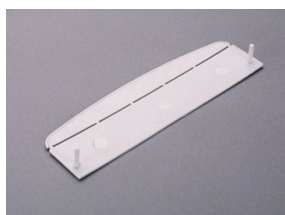
### 33 145

prism terminal, double, for Cu cables  
2x 35-70 mm<sup>2</sup>  
size 1



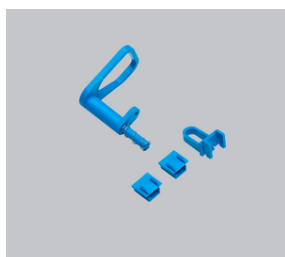
### 33 152

Trim frame  
215 x 330  
size 1



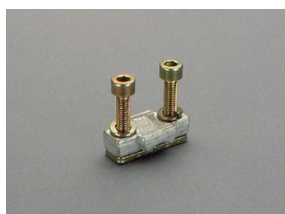
### 33 155

barrier for handle for NH fuse-switch disconnecter size 1-3  
for closing of handle area from rear



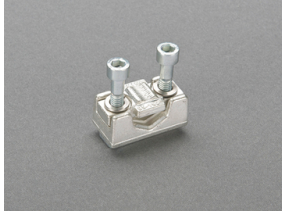
### 33 157

lid interlock  
for sealing wire or 3 padlocks with shackle of 4-7 mm  
Size 1 - 3



### 33 163

clamp connector for Cu cables  
70 - 150 mm<sup>2</sup>  
size 1

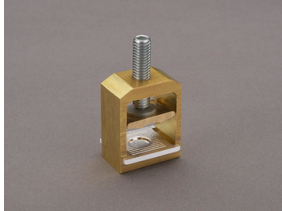


**33 166**

prism terminal, single, for Cu and Al cables

35 - 150mm<sup>2</sup>

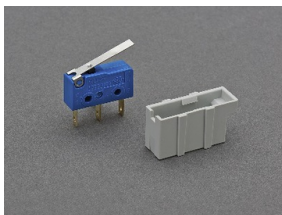
size 1



**33 909**

box terminal for Cu cables

35 - 150 mm<sup>2</sup>

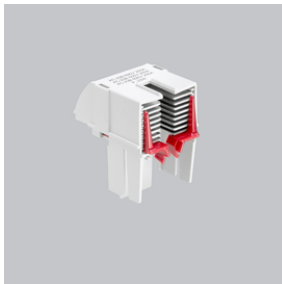


**33 917**

pilot switch

changeover 250 V AC / 5 A; 30 V DC / 4 A

Size 1



**33 918**

arcing chamber

retrofit package for higher utilisation category

for QCB-NH1