

MODULAR CURRENT TRANSFORMERS FOR DISTRIBUTOR INSTALLATION



MG900220

SCHRACK-INFO

- Suitable for other REG devices such as RCCB, etc., 45 mm slot
- Easy to feedthrough
- For coarse display of measured value
- Space-saving - only 2 MW wide

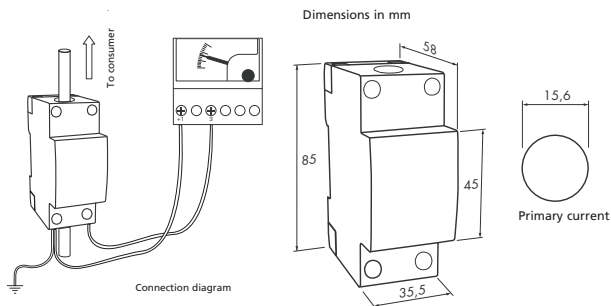
TIPS & TRICKS

Do not confuse current direction (energy flow) during feedthrough. The secondary load (e.g. 2 VA) must fit the consumption of the measuring instrument!

TECHNICAL DATA

- 2 MW housing with primary feedthrough max. 15 mm
- Mounting: DIN rail
- Class 3, 40 - 80 A
- Class 1, 100 - 150 A
- Powers 2 / 3 / 5 VA

DIMENSIONS AND CIRCUIT DIAGRAMS



POWER TABLE

A	Class 1		Class 3	
	Secondary current 5 A		Secondary current 5 A	
	Type	VA	Type	VA
40			TCSM15 40 A	2
50			TCSM15 50 A	2
60			TCSM15 60A	3
80			TCSM15 80A	3
100	TCSM15 100A	3		
120	TCSM15 120A	5		
150	TCSM15 150A	5		

DESCRIPTION	PU	TYPE	WEIGHT (kg)	EAN CODE	AVAILABLE	ORDER NO.
Modular current transformer 40 A / 5 A	2	TCSM15 40 A	0.25	9004840277289		MG900220
Modular current transformer 50 A / 5 A	2	TCSM15 50 A	0.25	9004840277296		MG900221
Modular current transformer 60 A / 5 A	2	TCSM15 60 A	0.25	9004840277302		MG900222
Modular current transformer 80 A / 5 A	2	TCSM15 80 A	0.25	9004840277319		MG900224
Modular current transformer 100 A / 5 A	2	TCSM15 100 A	0.25	9004840277326		MG900225
Modular current transformer 120 A / 5 A	2	TCSM15 120 A	0.25	9004840277333		MG900226
Modular current transformer 150 A / 5 A	2	TCSM15 150 A	0.25	9004840277340		MG900227



I KNOW WHERE TO FIND IT!

THE SCHRACK TECHNIK WEB SHOP WITH NAVIGATOR
WWW.SCHRACK.COM

- Finding product information made easy
- Buying products around the clock
- Quick access customer service

CURRENT TRANSFORMERS

MINIATURE CURRENT TRANSFORMERS FOR CABLE 13 mm Ø



MG900300

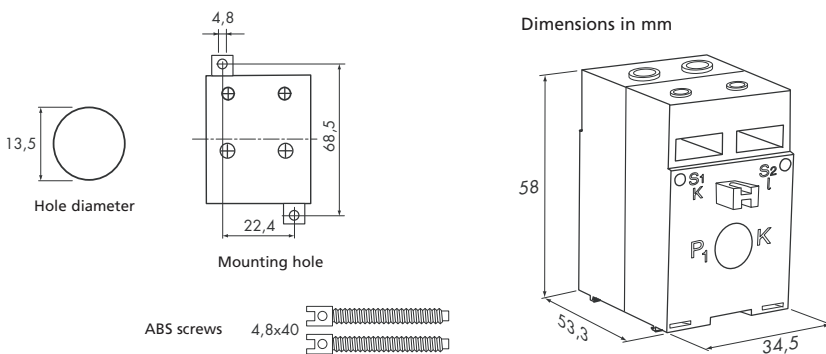
SCHRACK-INFO

- Sealable terminal cover
- Degree of protection IP 20 (excluding terminal cover)

TECHNICAL DATA

- 3x secondary connection: Faston connector, quick-connect spring-clamp terminal, screw terminal
- Screw mounting to the busbar/connector, optional snap-on mounting

DIMENSIONS AND CIRCUIT DIAGRAMS



POWER TABLE

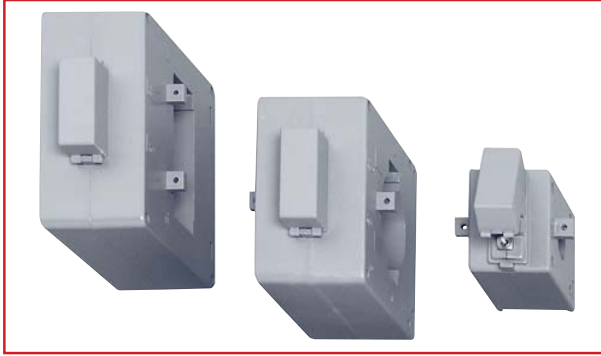
A	Class 1		Class 3	
	Type	VA	Type	VA
40			TCS13 40 A	2
50			TCS13 50 A	2
60			TCS13 60A	3
75			TCS13 75A	3
80			TCS13 80A	3
100	TCS13 100A	3		
120	TCS13 120A	5		
150	TCS13 150A	5		

Page
580

DESCRIPTION	TYPE	WEIGHT (kg)	EAN CODE	AVAILABLE	ORDER NO.
Miniature current transformer 40 A / 5 A	TCS13 40 A	0.25	9004840277357		MG900300
Miniature current transformer 50 A / 5 A	TCS13 50 A	0.25	9004840277364		MG900301
Miniature current transformer 60 A / 5 A	TCS13 60 A	0.25	9004840277371		MG900302
Miniature current transformer 75 A / 5 A	TCS13 75 A	0.25	9004840277388		MG900303
Miniature current transformer 80 A / 5 A	TCS13 80 A	0.25	9004840277395		MG900304
Miniature current transformer 100 A / 5 A	TCS13 100 A	0.25	9004840277401		MG900305
Miniature current transformer 150 A / 5 A	TCS13 150 A	0.25	9004840277425		MG900307



CURRENT TRANSFORMERS, SERIES TAR – GENERAL INFORMATION



THROUGH-WIRING CURRENT TRANSFORMER TAR

SCHRACK-INFO

- Case in ABS
- Degree of protection IP30
- Design complies with standards IEC 185, VDE 0414, EN 60044-1 (38-1)

TECHNICAL DATA

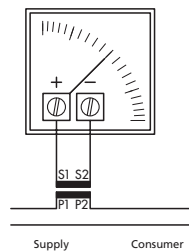
- Secondary current: Standard 5 A (other secondary currents on request)
- Maximum operating voltage: 1.2 kV
- Test voltage: 6 kV at 50 Hz for 1 minute
- Thermal nominal short-time current (I_{th}): $40 I_{pN}/1 s$
- Dynamic short-circuit current (I_{dyn}): $2.5 I_{th}/1 s$
- Permanent overload: $1.2 I_{pN}$
- Nominal frequency: 50/60 Hz
- Insulation class E (IEC 185)

TIPS & TRICKS

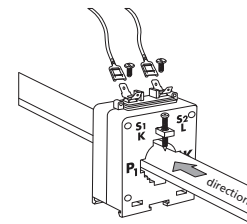
- During the installation make sure of the exact input direction (P1 - K) and output (P2 - L) of the primary cable
- In the case of the types with primary and secondary cables on terminals, do not invert the connection of the primary cable with the secondary one
- If is necessary to disconnect the measuring instruments from the CT while operating it is necessary to make a short circuit between the two terminals of the secondary on the CT
- It is recommended to ground the CTs
- Use class 0.5 for calibrated energy meters Class 1 for display measuring instruments and non-calibrated energy meters Class 3 for relays and measuring instrument without accuracy requirements (coarse display)
- Don't neglect the load of the measuring line! (e.g., 4 m of 1.5 mm² Cu wires required 2.31 VA at 5 A secondary current)

POWER TABLE AND MOUNTING

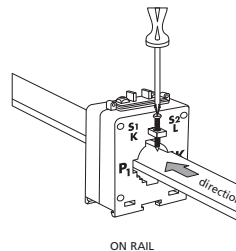
Current transformer									
Series	TAR 1D	TAR 3D	TAR 4D	TAR 5	TAR 6	TAR 8	TAR 12		
Version	Plug-on transformer								
Horiz. rail Cable	–	30 x 10	40 x 10		64 x 20	80 x 30	125 x 50		
	20	23	32		50	2 x 30	2 x 50		
Primary current	Power (VA) - Class	Power (VA) - Class	Power (VA) - Class	Power (VA) - Class	Power (VA) - Class	Power (VA) - Class	Power (VA) - Class	Power (VA) - Class	Power (VA) - Class
(A)	0,5 1 3	0,5 1 3	0,5 1	0,5	0,2 0,5 1	0,5 1	0,5 1	0,5 1	0,5 1
50		3		2					
60		3		3					
80		3							
100	3		3						
150	3		3						
200	3		3						
250	5		5						
300			5						
400			5						
500			6		10	6			
600			6		10	10			
800			6		10				
1000					5	10	20		
1500					5	20	40	10	20
2000						30	60	20	40
2500						30	60	20	40
3000								20	40
4000								40	80
								50	100



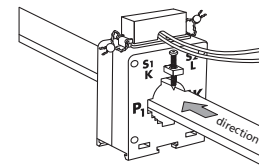
Supply Consumer



CONNECTION WITH 6.3 mm FLAT CONNECTOR



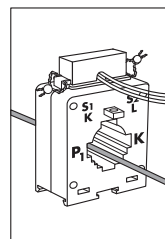
ON RAIL



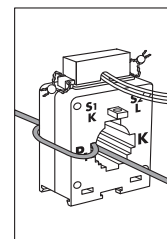
TERMINAL COVER WITH SEAL

By repeated wrapping of the primary cable around the current transformer, each wrap results in half the primary current, while the power and class remain unchanged.

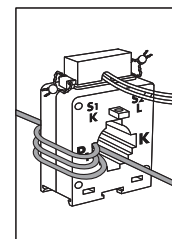
EXAMPLE:



TAR 4D 200/5 A WITH ONE CABLE PASS



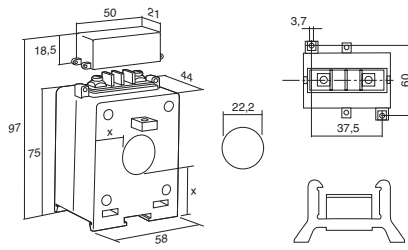
RECEIVES 100/5 A WITH 2-FOLD CABLE PASS



RECEIVES 50/5 A WITH 4-FOLD CABLE PASS

CURRENT TRANSFORMERS

CURRENT TRANSFORMERS, SERIES TAR 1D, FOR CABLES UP TO 20 mm Ø

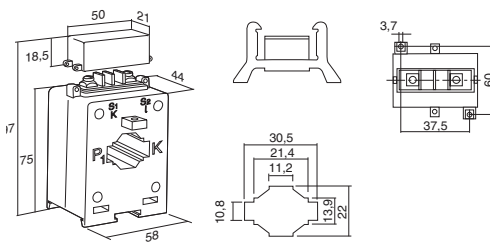


SCHRACK-INFO

- Suitable for cables up to 20 mm diameter
- Secondary current: 5 A

TRANSFORMER	DIM. (WxHxD) mm	TYPE	WEIGHT (kg)	EAN CODE	AVAILABLE	ORDER NO.
50/5 A	58x97x44	TAR1D-50	0.3	9004840090338		MG952005
60/5 A	58x97x44	TAR1D-60	0.3	9004840090345		MG952006
80/5 A	58x97x44	TAR1D-80	0.3	9004840090352		MG952008
100/5 A	58x97x44	TAR1D-100	0.3	9004840090369		MG952010
150/5 A	58x97x44	TAR1D-150	0.3	9004840090376		MG952015
200/5 A	58x97x44	TAR1D-200	0.3	9004840090383		MG952020
250/5 A	58x97x44	TAR1D-250	0.3	9004840090390		MG952025

CURRENT TRANSFORMER, SERIES TAR 3D, FOR BUSBAR UP TO 30x10 mm



SCHRACK-INFO

- Also suitable for cables up to 23 mm diameter
- Secondary current: 5 A

TRANSFORMER	DIM. (WxHxD) mm	TYPE	WEIGHT (kg)	EAN CODE	AVAILABLE	ORDER NO.
50/5 A	58x97x44	TAR3D-50	0.3	9004840203011		MG954005
60/5 A	58x97x44	TAR3D-60	0.3	9004840203028		MG954006
100/5 A	58x97x44	TAR3D-100	0.3	9004840090406		MG954010
150/5 A	58x97x44	TAR3D-150	0.3	9004840090413		MG954015
200/5 A	58x97x44	TAR3D-200	0.3	9004840090420		MG954020
250/5 A	58x97x44	TAR3D-250	0.3	9004840090437		MG954025
300/5 A	58x97x44	TAR3D-300	0.3	9004840090444		MG954030
400/5 A	58x97x44	TAR3D-400	0.3	9004840090451		MG954040
500/5 A	58x97x44	TAR3D-500	0.3	9004840090468		MG954050
600/5 A	58x97x44	TAR3D-600	0.3	9004840090475		MG954060



I KNOW WHERE TO FIND IT!

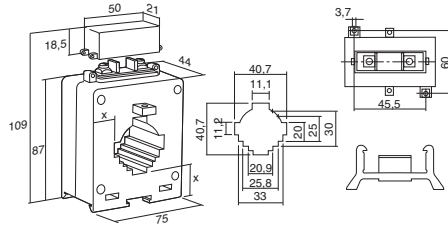
WITH THE SCHRACK TECHNIK LIVE-PHONE APP

- Access technical product information at any time and from everywhere
- See availability and price immediately
- Order desired products easily



CURRENT TRANSFORMERS

■ CURRENT TRANSFORMER, SERIES TAR 4D, FOR BUSBAR UP TO 40x10 mm

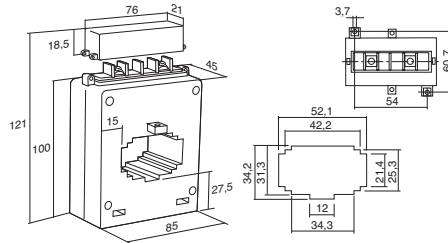


■ SCHRACK-INFO

- Suitable for cables up to 32 mm diameter
- Secondary current: 5 A

TRANSFORMER	DIM. (WxHxD) mm	TYPE	WEIGHT (kg)	EAN CODE	AVAILABLE	ORDER NO.
400/5 A	75x97x44	TAR4D-400	0.4	9004840090482		MG955040
500/5 A	75x97x44	TAR4D-500	0.4	9004840090499		MG955050
600/5 A	75x97x44	TAR4D-600	0.4	9004840090505		MG955060
800/5 A	75x97x44	TAR4D-800	0.4	9004840090512		MG955080

■ CURRENT TRANSFORMER, SERIES TAR 5D, FOR BUSBAR UP TO 50x30 mm



■ SCHRACK-INFO

- For busbar systems
- Secondary current: 5 A

TRANSFORMER	DIM. (WxHxD) mm	TYPE	WEIGHT (kg)	EAN CODE	AVAILABLE	ORDER NO.
400/5 A	121x62x85	TAR5-400		9004840622911		MG956040
600/5 A	121x62x85	TAR5-600		9004840622904		MG956060



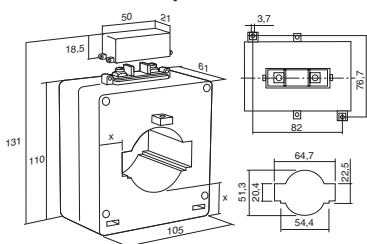
I KNOW WHERE TO FIND IT!

THE SCHRACK TECHNIK WEB SHOP WITH NAVIGATOR
WWW.SCHRACK.COM

- Finding product information made easy
- Buying products around the clock
- Quick access customer service

CURRENT TRANSFORMERS

CURRENT TRANSFORMER, SERIES TAR 6D, FOR BUSBAR UP TO 60x20 mm

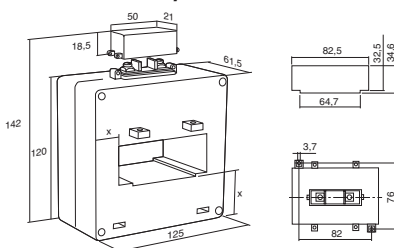


SCHRACK-INFO

- Also suitable for cables up to 50 mm diameter
- Secondary current: 5 A

TRANSFORMER	DIM. (WxHxD) mm	TYPE	WEIGHT (kg)	EAN CODE	AVAILABLE	ORDER NO.
800/5 A	105x131x61	TAR6-800	0.7	9004840101836		MG957080
1000/5 A	105x131x61	TAR6-1000	0.7	9004840091038		MG957100
1500/5 A	105x131x61	TAR6-1500	0.8	9004840115291		MG957150
2000/5 A	105x131x61	TAR6-2000	0.8	9004840091045		MG957200

CURRENT TRANSFORMER, SERIES TAR 8D, FOR BUSBAR UP TO 80x30 mm



SCHRACK-INFO

- Also suitable for cables up to 30 mm diameter
- Secondary current: 5 A

TRANSFORMER	DIM. (WxHxD) mm	TYPE	WEIGHT (kg)	EAN CODE	AVAILABLE	ORDER NO.
1000/5 A	125x142x61.5	TAR8-1000	0.7	9004840091052		MG958100
1500/5 A	125x142x61.5	TAR8-1500	1.0	9004840091069		MG958150
2000/5 A	125x142x61.5	TAR8-2000	1.0	9004840091076		MG958200
2500/5 A	125x142x61.5	TAR8-2500	1.0	9004840091083		MG958250



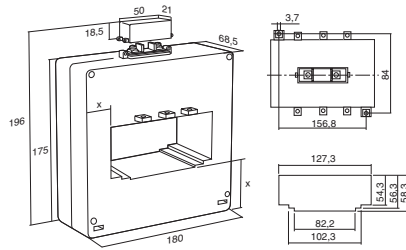
I KNOW WHERE TO FIND IT!

WITH THE SCHRACK TECHNIK LIVE-PHONE APP

- Access technical product information at any time and from everywhere
- See availability and price immediately
- Order desired products easily


CURRENT TRANSFORMERS

■ CURRENT TRANSFORMER, SERIES TAR 12D, FOR BUSBAR UP TO 125x50 mm



■ SCHRACK-INFO

- Also suitable for cables up to 50 mm diameter
- Secondary current: 5 A

TRANSFORMER	DIM. (WxHxD) mm	TYPE	WEIGHT (kg)	EAN CODE	AVAILABLE	ORDER NO.
2000/5 A	180x196x68.5	TAR12-2000	1.5	9004840149951		MG959200
2500/5 A	180x196x68.5	TAR12-2500	1.6	9004840149968		MG959250
3000/5 A	180x196x68.5	TAR12-3000	1.6	9004840149975		MG959300
4000/5 A	180x196x68.5	TAR12-4000	2.0	9004840149982		MG959400



I KNOW WHERE TO FIND IT!

THE SCHRACK TECHNIK WEB SHOP WITH NAVIGATOR
WWW.SCHRACK.COM

- Finding product information made easy
- Buying products around the clock
- Quick access customer service



CURRENT TRANSFORMERS

SPLIT CORE CURRENT TRANSFORMERS



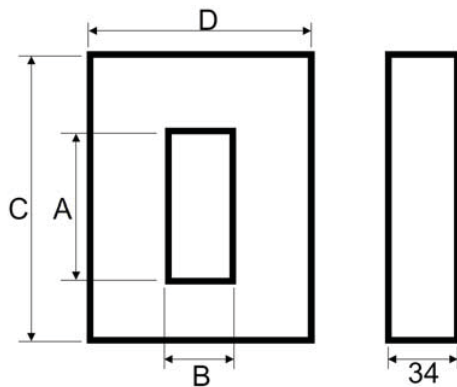
SCHRACK-INFO

- Easy mounting of a current transformer into an existing low-voltage system
- IP30

TECHNICAL DATA

- Primary current: 100 A, 150 A, 250 A, 400 A, 600 A
- Secondary current: 5 A
- Nominal voltage: 0.72 kV
- Frequency: 50-60 Hz
- Test voltage: 3 kV for 1 minute (at 50 Hz)
- Thermal class: A
- Thermal short-circuit current (I_{th}): 60 I_n
- Dynamic limiting current (I_{dyn}): 2.5 I_{th}
- Overcurrent limiting factor: FS 5
- Housing: Self-extinguishing plastic
- Mounting: Screw fastening

DIMENSIONS



POWER TABLE

Primary current	Class 0.5	Class 1	Class 3
100 A			3.00
150 A			3.75
250 A		3.75	5.00
400 A	2.50	3.75	7.50
600 A	5.00	7.50	20.0

Primary current	A	B	C	D	Capacity / copper rail	Capacity / cable
100 A	32 mm	22 mm	106 mm	90 mm	30 x 20 mm	≤ 20 mm
150 A	32 mm	22 mm	106 mm	90 mm	30 x 20 mm	≤ 20 mm
250 A	32 mm	22 mm	106 mm	90 mm	30 x 20 mm	≤ 20 mm
400 A	62 mm	32 mm	136 mm	100 mm	60 x 30 mm	≤ 30 mm
600 A	62 mm	32 mm	136 mm	100 mm	60 x 30 mm	≤ 30 mm

DESCRIPTION	EAN CODE	AVAILABLE	ORDER NO.
100/5 A, 30x20 mm	9004840665949		MG967100
150/5 A, 30x20 mm	9004840665956		MG967150
250/5 A, 30x20 mm	9004840665963		MG967250
400/5 A, 60x30 mm	9004840665970		MG968400
600/5 A, 60x30 mm	9004840665987		MG968600